

SC-615BS

PAGING HORN SPEAKER



The SC-615BS is the voice alarm certification product. This speaker can be a clearer announcement for voice alarm. The SC-615BS Paging horn speaker features an aluminum horn flare and stainless steel bracket for all weather durability. The SC-615BS unique oval shape horn enhances excellent speech clarity.

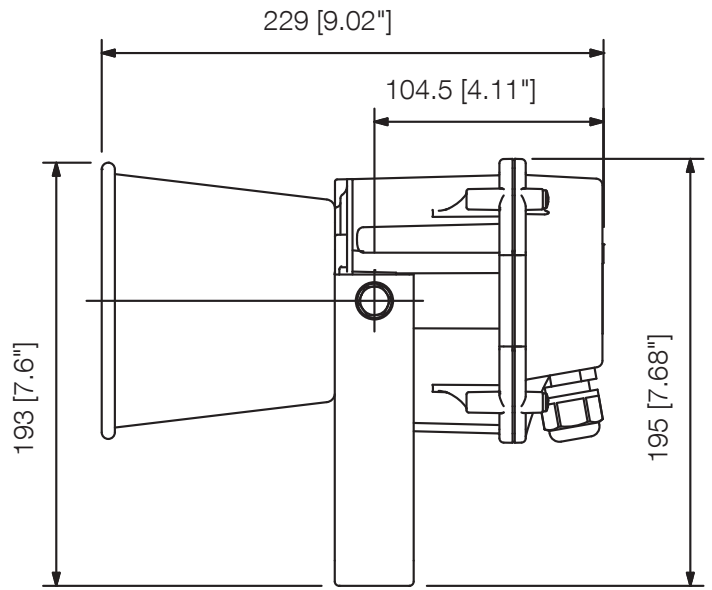
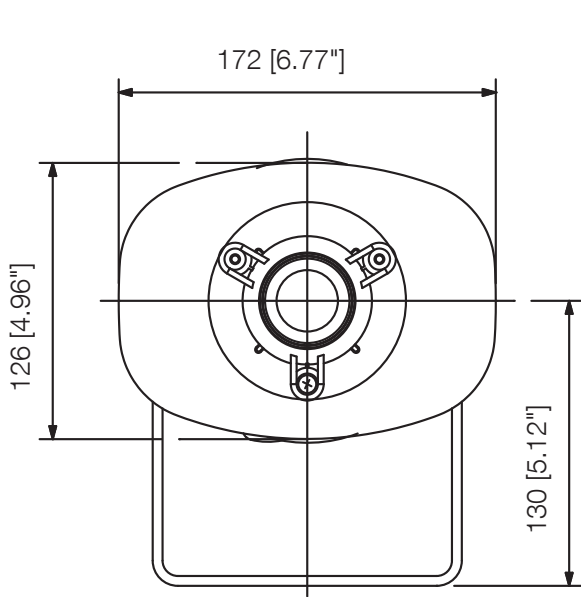
Key features

- All weather durability
- Very rugged and durable construction ensures long term reliable operation
- Excellent speech clarity
- High SPL
- Wide frequency response
- Easy impedance selection
- Certified according to EN 54-24, ISO 7240-24
- Compliant with BS-5839-8

Specifications

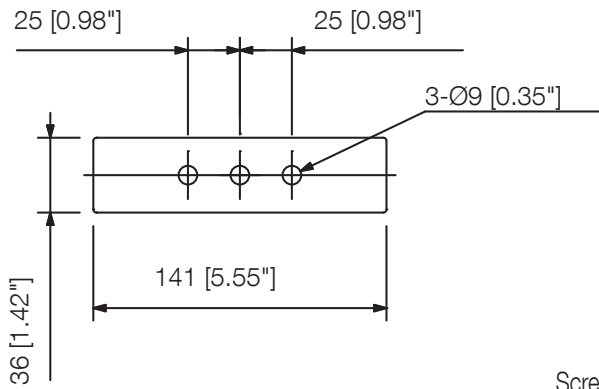
Rated Noise Power	15 W (100 V Line and 70 V Line)
Rated Impedance	100 V line: 670 Ω (15 W), 1 k Ω (10 W), 2 k Ω (5 W), 3.3 k Ω (3 W) 70 V line: 330 Ω (15 W), 670 Ω (7.5 W), 1 k Ω (5 W), 2 k Ω (2.5 W), 3.3 k Ω (1.5 W)
Sensitivity	109 dB (1 W, 1 m) (500 Hz - 2.5 kHz, peak level) 100 dB (1 W, 1 m) (100 Hz - 10 kHz, pink noise) 88 dB (1 W, 4 m) (100 Hz - 10 kHz, pink noise)
Maximum Sound Pressure Level	110 dB (15 W, 1 m) (100 Hz - 10 kHz, pink noise) 98 dB (15 W, 4 m) (100 Hz - 10 kHz, pink noise)
Frequency Response	315 Hz - 12.5 kHz
Coverage Angle	Horizontal: 360° (500 Hz), 160° (1 kHz), 85° (2 kHz), 45° (4 kHz) Vertical: 360° (500 Hz), 200° (1 kHz), 115° (2 kHz), 60° (4 kHz)
Environmental Type	B (outdoor applications)
Speaker Mounting Method	Wall-mount
Cable Gland	Size: PG 13.5 One cable gland is factory-installed. For bridge connection, one cable gland can be added.*
Cable Requirements	Outer diameter: #8-12.5 mm Conductor: Solid wire or 7-core wire No bridge connection: 0.8 - 10 m# (AWG18-AWG7) for solid wire, 0.8 - 8 m# (AWG18-AWG8) for 7-core wire Bridge connection: 0.8 - 2.5 m# (AWG18-AWG13) for solid wire, 0.8 - 1.5 m# (AWG18-AWG15) for 7-core wire
Connection	Screw terminal (steatite), can be bridge-connected
Dust/Water Protection	IP65
Operating Temperature	-20 # to +55 # (-4 # to 131 #)
Finish	Horn flare: Aluminum, off-white, powder coating Reflector horn, Trans case, and Terminal cover: ABS resin, off-white Bracket, screws and bolts: Stainless steel
Dimensions	172 (W) x 195 (H) x 229 (D) mm (6.77 x 7.68" x 9.02")
Weight	1.5 kg (3.31 lb)
Included Accessories	Terminal cover...1
Optional Accessories	Swivel bracket: YS-151S (Can be used instead of the supplied bracket.)

Dimensions

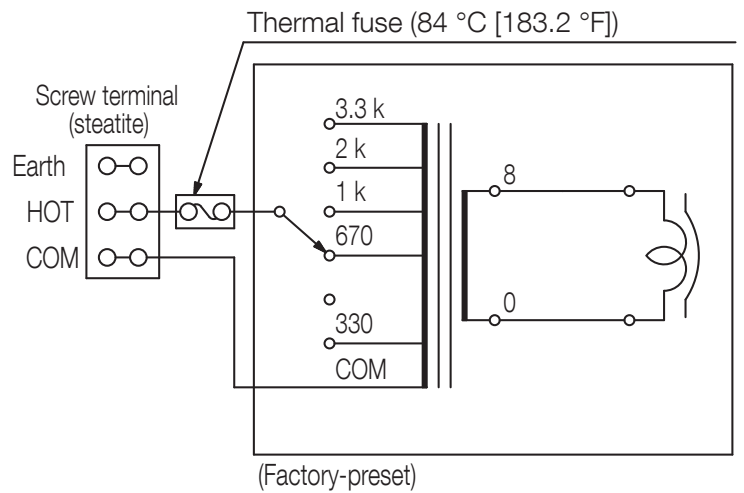


Front View

Side View



Dimensional Diagram



Wiring Diagram

UNIT:mm

SCALE:1/4

A&E specifications

The speaker shall be a weatherproof horn speaker suitable for both indoor and outdoor applications. It is also designed for use in voice evacuation systems. Rated input shall be 15 W. Input impedance shall be easily adjustable with rotary switch on the rear side of the speaker. The speaker shall include a transformer having multiple taps (3 W, 5 W, 10 W, 15 W at 100 V and 1.5 W, 2.5 W, 5 W, 7.5 W, 15 W at 70 V) adjustable. The sensitivity at a distance of 1m with a 1W input level applied shall be 109 dB, high efficiency. The speaker shall have a frequency response of 315 – 12.5 kHz. Horizontal and vertical dispersion at -6 dB below the on-axis reference at 2 kHz shall be 85° (H) x 115° (V). The speaker shall have an operating temperature of -20°C to +55°C. The speaker diaphragms shall be employing special heat-resistant fibres impregnated with phenolic resin to prevent the diaphragm from absorbing moisture and changing shape. The aluminium foil bobbin shall have excellent heat dissipation properties to resist high power inputs and ensure high speaker durability. The speaker shall have enhances excellent speech clarity. The mounting brackets and all external hardware (screws, bolts) shall be made of stainless steel. The speaker shall have excellent weatherproofing and corrosion resistance. The speaker shall have an IEC 60529 / EN 60529 dust tight and jet-water proof rating of IP65c. The external horn flare shall be made of aluminium, which shall have more shock resistant than resin. A fire-resistant steatite screw terminal block with thermal fuse with a blowing temperature of 84°C allows secure cable connections and bridge wiring. Internal cables shall be flame-resistant insulation. Fire Rated Cable can be directly connected to the speaker cabinet via 20 mm cable gland. The switch is also equipped with an OFF position to prevent speaker damage resulting from incorrect impedance setting. The speaker shall be certified according to EN 54-24 with CPD Number 0359-CPD-0109, certified according to ISO 7240-24 and in compliance with the British Standard BS 5839-8. The speaker shall be a TOA model SC-615BS.