

## RM-300MF

### VM FIREMAN'S MICROPHONE



The RM-300MF Fireman's Microphone is designed for exclusive use with the VM-3000 Series. It is equipped with an emergency activation key, permitting pre-recorded evacuation and alert announcements to be activated, and microphone announcement to be made in emergency situations. By connecting the RM-320F Fireman's Microphone Extension to the RM-300MF, the number of function keys can be expanded. The zone selection or failure acknowledgment function can be assigned to such function keys.

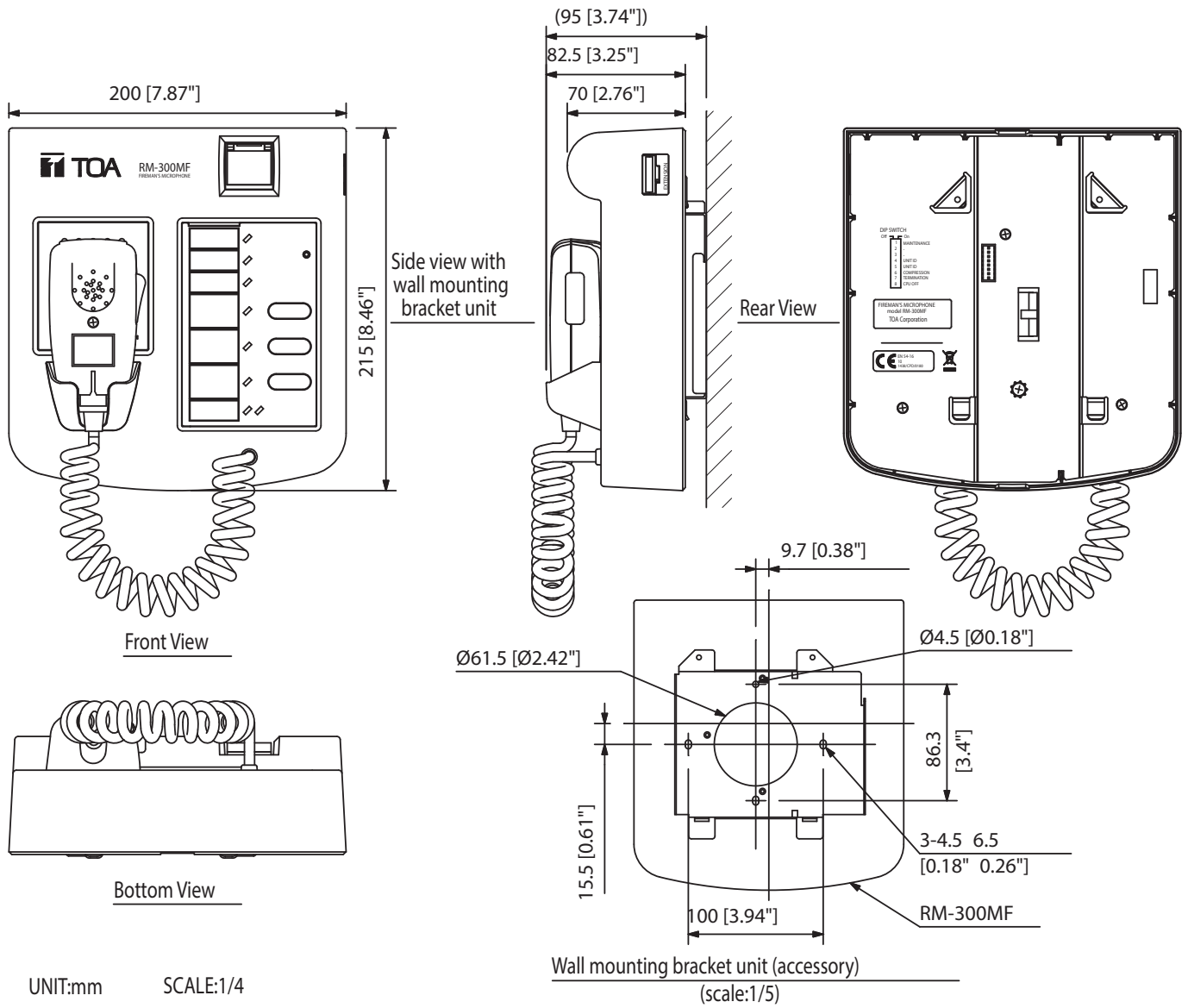
### Key features

- Exclusively for broadcasts made by firemen in emergency situations
- For activation of emergency mode, start and stop automatic broadcasts of emergency announcements, reset emergency signals and live microphone announcements
- CPU-switch for emergency broadcast to all zones even in case of a CPU error

## Specifications

Power Source	24 V DC (operating range: 15 – 40 V DC, supplied from the VM-3000 system)
Operation	Emergency key, Evacuate key, Alert key, Emergency reset key, CPU switch, Reset key
Current Consumption	120 mA (RM-300MF), 660 mA (with 3 RM-320Fs connected)
Distortion	1% or less
Frequency Response	200 Hz – 15 kHz
Signal to Noise Ratio	55 dB or more
Microphone	Unidirectional dynamic microphone with talk key, compressor (on/off switchable)
Volume Control	Microphone volume control, buzzer volume control
Maximum Cable Length	Total 800 m
Connection Cable and Connector	Main line: Shielded CPEV cable (each one pair of Audio line, Data line,
Terminal	Power supply line) or Category 5 Shielded Twisted-Pair straight cable for LAN (CAT5-STP), M3 screw terminal
Number of Connectable RM-320F	Max. 3 units
Indicator	Power Indicator, Emergency Indicator, Communication Failure Indicator, CPU OFF Indicator, Evacuation Announcement Indicator, Alert Announcement Indicator, Emergency Reset Indicator, Microphone In-Use Indicator, External Emergency Equipment In-Use Indicator
Operating Temperature	–5 to +45 °C
Operating Humidity	5 to 95%RH (no condensation)
Finish	ABS resin, blueish gray (PANTONE 538 or its equivalent)
Dimensions	200 (w) x 215 (h) x 82.5 (d) mm
Weight	1.1 kg

## Dimensions



UNIT:mm

SCALE:1/4

## A&E specifications

Fire station with easy-to-use hand-held microphone with talk button. 4 Emergency control buttons, of which a key to trigger the emergency mode with folding safety cover, the other buttons to start warning and evacuation messages and termination of the emergency mode. The intercom is keyboard extensions on expandable up to 65 keys with which other features are possible, including: - Triggering alerts from the text memory in specific sections of the fire- Triggering of evacuation messages from the text memory in specific sections of the fire- Manual announcements in selectable ranges - standard-compliant acoustic and optical display specific error messages Firmly integrated failed error communication between station and headquarters, CPU errors and level, ads for readiness. Built-in speaker to the acoustic error message. Adjustable microphone and speaker levels. In the hand-held microphone of built-in beeper to monitor the MIC capsule including the acoustic-electric conversion. Monitoring of control and audio paths, as well as the preamplifier according to EN 54-16, VDE 0833-4 and VDE 0828-1 (EN 60849). As an additional safety feature can failure of the digital control, CPU failure of the intercom is switched off and announcements in all areas be discontinued. Wall mount included. The station is along with the VM-3000 voice alarm system certified by a notified body (notified) according to EN 54-16.