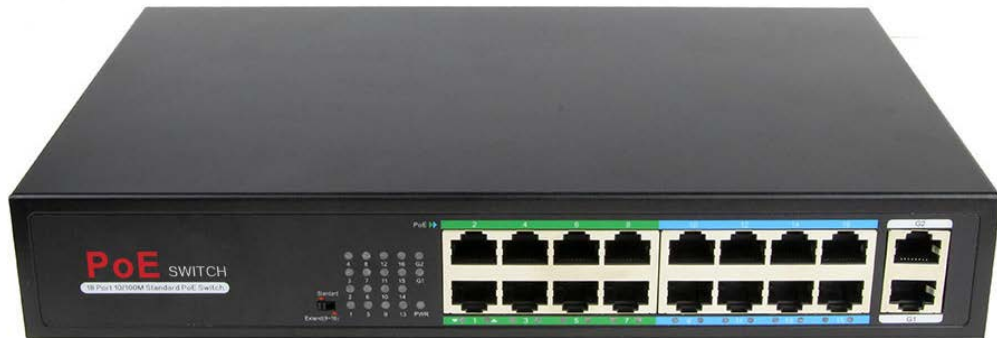


10/100M POE Switch

(H1016PL)



OVERVIEW

H1016PL series supports 16 Gigabit ports to support IEEE 802.3af/at standard POE power supply, single port POE power up to 30W, and the maximum POE output power of the whole machine is 200W. As a POE power supply device, it can automatically detect and identify the electrical equipment that meets the standard and supply power through the cable. It can supply the POE terminal equipment such as wireless AP, network camera, network telephone, PDA and so on. It can satisfy the demand of high density POE power supply network environment. It is suitable for the hotel, campus, factory dormitory and small and medium enterprises to form an economical and efficient network.

Non-network management models, plug and play, no configuration, easy to use.

FEATURE

■ 10/100M POE With Gigabit Uplink

- ◇ 16*10/100M electric ports and 2*10/100/1000M electric ports
- ◇ Support non-blocking wire speed forwarding .
- ◇ Support full duplex based on IEEE802.3x and half duplex based on backpressure .

■ Intelligent POE Power Supply

- ◇ 16*10/100 Base-T RJ45 ports support POE power supply to meet the requirements of POE power supply for security monitoring, teleconferencing systems, and wireless coverage scenarios.
- ◇ Conforms to the IEEE 802.3af POE power supply standard, automatically recognizes POE devices for power supply, without damaging non-POE devices. The maximum POE output power of the entire device reaches 200 W, and the maximum POE output power of a single port is 30 W.
- ◇ The POE Port supports the priority mechanism. when the remaining power is insufficient, the power of the high-priority port is preferentially protected to avoid overloading the device.

■ Simple Operation

- ◇ Plug and play, without configuration, simple and convenient.
- ◇ Long distance function switch with port 9-16 support 10M/250 meters long distance transmission.
- ◇ The user can easily understand the working state of the device through the power indicator lamp (Power) and the port status indicator (Link/Act).

■ The Equipment Is Stable And Reliable

- ◇ The host has low power consumption, no fan mute design, and metal case to ensure stable operation of the product.
- ◇ It uses high redundancy design to provide stable POE power output for a long time.
- ◇ The equipment meets the national CCC standard and is in full compliance with the safety requirements of CE, FCC, and ROHS. It is safe and reliable to use.

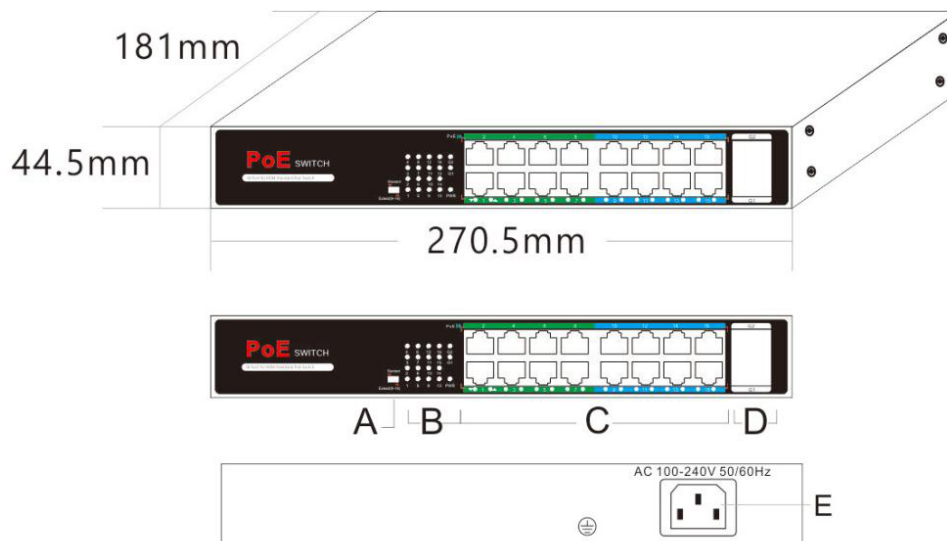
TECHNICAL SPECIFICATION

Model	H1016PL	H1024PL
Interface	16*10/100Base-TX POE Ports (Data/Power) 2*10/100/1000Base-TX Uplink RJ45 Ports (Data)	8*10/100Base-TX POE Ports (Data/Power) 2*10/100Base-TX Uplink RJ45 Ports (Data)
POE Port	Port 1-4 support POE @ IEEE802.3af/at	Port 1-8 support POE @ IEEE802.3af/at
Functional Switch	1 (Extender)	
Network Protocol	IEEE802.3 10BASE-T; IEEE802.3i 10Base-T; IEEE802.3u 100Base-TX/FX; IEEE802.3ab 1000Base-TX IEEE802.3z 1000Base-FX IEEE802.3x	
POE Standard	IEEE802.3af/at	
Ethernet Port Feature	Port 1-16: 10/100BaseT(X),Auto-sensing, Port 17-18: 10/100/1000BaseT(X),Auto-sensing, Full/half duplex MDI/MDI-X self-adaption	
Forwarding Mode	Store and Forward(Full Wire Speed)	
Switching Capacity	14.8Gbps (Non-blocking)	
Forwarding Rate@64byte	5.36Mpps	6.55Mpps
MAC	16K	

Buffer Memory	4M	
Twisted Pair Transmission	10BASE-T: Cat3,4,5 UTP(≤100 meter) 100BASE-TX: Cat5 or later UTP(≤100 meter) 1000BASE-TX: Cat5 or later UTP(≤100 meter)	
Power Supply Pin	Default: 1/2(+),3/6(-); Option: 4/5(+),7/8(-)	
MAX / AVERAGE Power Per Port	30W/15.4W	
Total PWR / Input Voltage	200W (AC100-240V)	250W (AC100-240V)
Power Consumption	Standby: <15W; Full load: <200W	Standby: <20W; Full load: <250W
LED	Power Indicator Light: PWR (Green); Network Indicator: Link/Act (Yellow); Light Mouth Indicator: F (Green); POE Work Indicator: POE (Green)	
Power Supply	Built in AC:100~240V 50-60Hz 4.1A	Built in AC:100~240V 50-60Hz 4.1A
Operation TEMP / Humidity	-20~+55°C;5%~90% RH Non condensing	
Storage TEMP / Humidity	-40~+75°C;5%~95% RH Non condensing	
Dimension	270*181*44.5mm	330*204*44mm
Net /Gross Weight	<1.7kg / <2.2kg	<2.3kg / <3kg

Anti-surge / Protection Level	Anti-surge:4KV 8/20us; Protection Level:IP30
Certification	CE mark, commercial; CE/LVD EN60950; FCC Part 15 Class B; ROHS;
Warranty	1 Year (2 Years for Power Supply), lifelong maintenance.

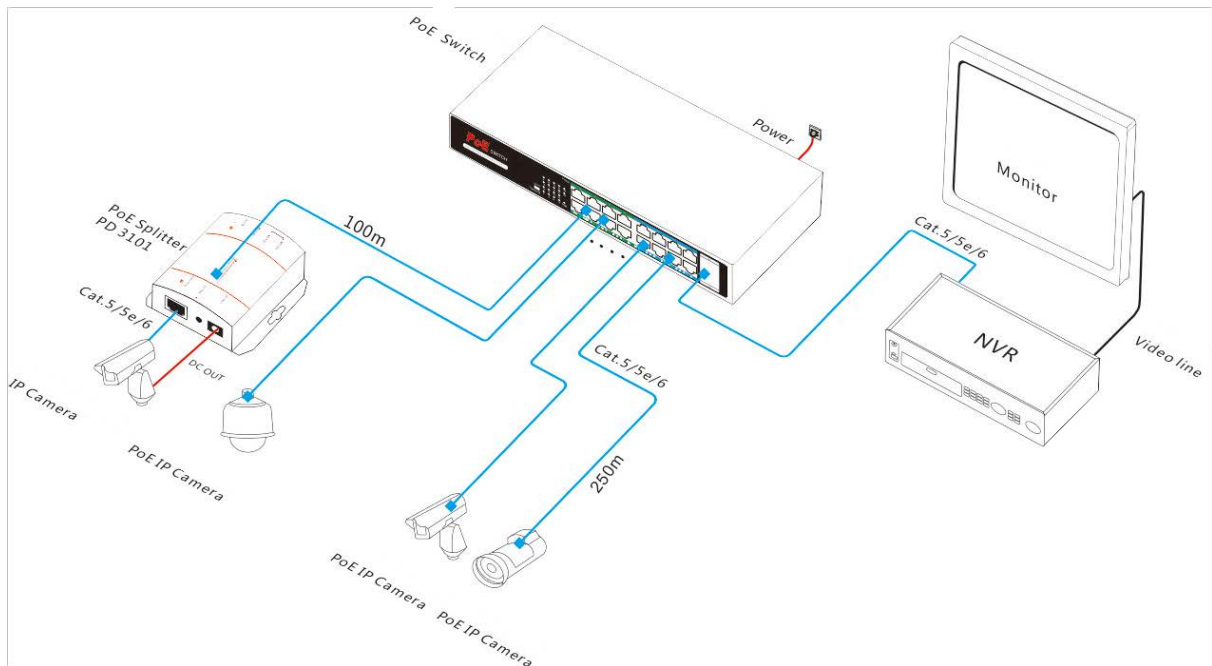
DIMENSION



A. Toggle Switch To Long Distance
C. 16*PoE Ports
E. Power Input Port

B. Working LED Indicator
D. 2*10/100/1000M Uplink RJ45 Ports

APPLICATION



PACKING LIST

PACKING LIST	CONTENT	QTY	UNIT
	16-Port 100/1000M POE Switch (H1016PL)	1	SET
	AC Power Line	1	PC
	Hardware Installation Accessories	1	SET
	User Guide	1	PC
	Warranty Card And Certificate Of Qualification	1	PC

ORDERING INFORMATION

Model	Description
H1016PL	16*10/100M electric port +2*10/100/1000M electric non network management POE switch, 1-16 of which support IEEE 802.3af/at POE standard, the total power 200W, built-in power supply.
H1024PL	24*10/100M +2*10/100/1000M POE non POE switch, 1-24 of which support IEEE 802.3af/at POE Standard, the total power of the whole machine is 250W, and the power is built.