

RG-RAP6260(G)

AX1800 Wi-Fi 6 Dual Band Gigabit Outdoor Access Point



Highlights

- Wi-Fi 6 AX1800 dual-band Gigabit outdoor access point
- Long-distance deployment with the optical port
- IP68 rating, adapting to harsh environments
- Easy outdoor Wi-Fi setup with Reyee Mesh
- Separated mounting bracket design allows for effortless high-altitude installation
- Rack-separated mounting design, easily installation on high

Highlight Features

Reyee Outdoor Wi-Fi 6 Access Point

RG-RAP6260(G)



Wi-Fi 6
Wi-Fi 6
1774 Mbps

Gigabit SFP
Port

Reyee Mesh
Technology

Free Cloud
Management

Outdoor Wi-Fi Can Also be Faster

AX1800 standard, 1201 Mbps speed in 5 GHz
Enjoy high-speed Wi-Fi even outdoors



Square



Scenic spot



Station



School



Market

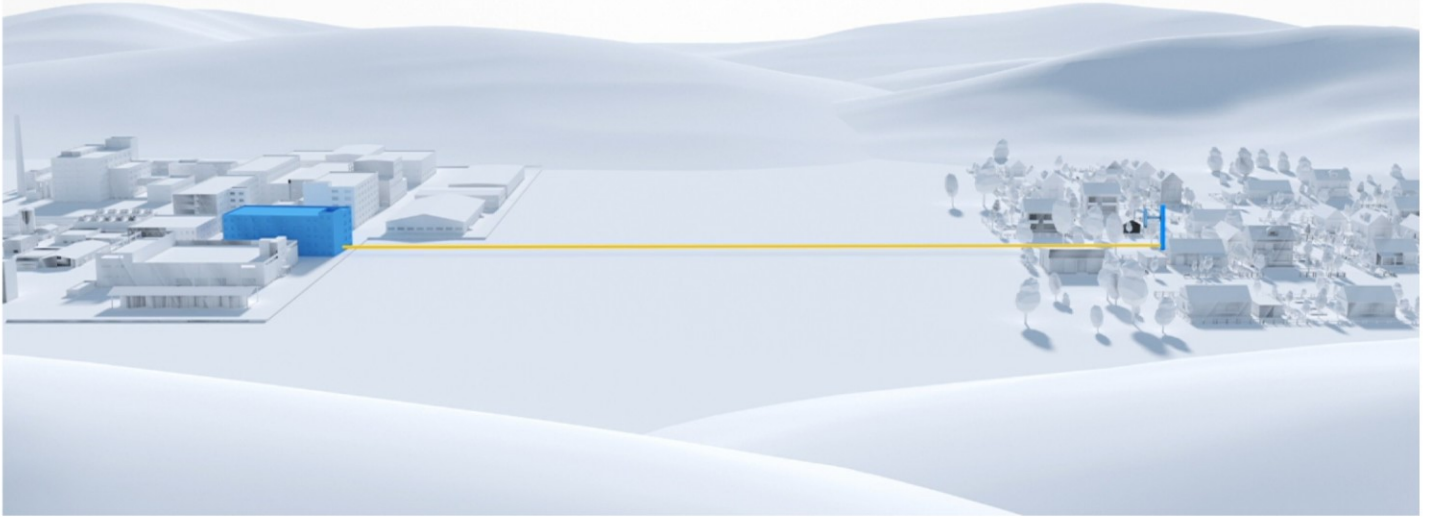


Construction Site

Highlight Features

Long-Distance Deployment

With the **Gigabit optical port**, the RG-RAP6260(G) supports data transmission of up to **20 km (12.43 miles)** from a data center using a single-mode fiber.



No Worries About Harsh Environment

Industrial-Level Design, More Reliable



IP68 Rating
Protection



Surge Protection
4000 V



Flame Retardant
V0 Highest Level



Operating Temperature
-40°C to 65°C (-40 °F to 149 °F)

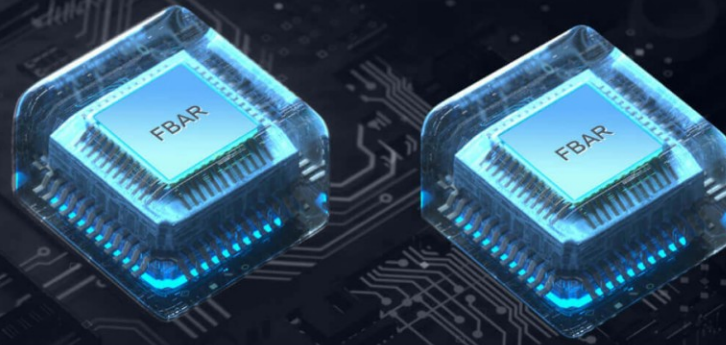


Highlight Features

Signal Interference Filtered, Transmission More Stabilized

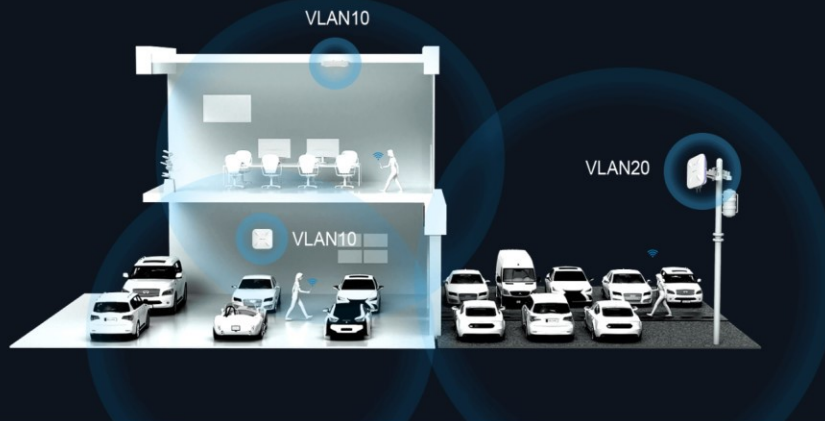
Equipped with a high-quality FBAR filter, the device can effectively suppress and filter the interference from ISP's cell base stations, Bluetooth devices, and other sources.

With high-quality antennas, the receiving sensitivity of the device is further optimized, thereby improving overall transmission quality.



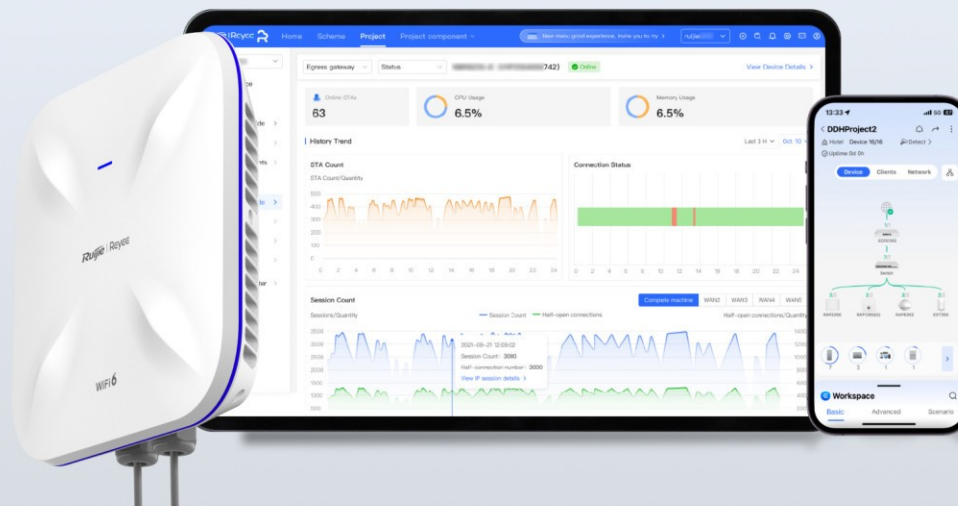
Layer 3 Roaming, Ensuring Always-on Service

With Layer 3 networking, when a user moves across the Layer 3 network, their client can perform a fast and seamless roaming switchover, ensuring uninterrupted service.



Cloud, Make Your Business Easy

- Self-organizing network
- Centralized network management
- Cloud portal authentication
- Remote monitoring and maintenance



Product Information

Model	RG-RAP6260(G)
Product Type	Outdoor AP

Hardware Specifications

Model	RG-RAP6260(G)
Wi-Fi Radio	
6 GHz Wi-Fi	No
5 GHz Wi-Fi	Wi-Fi 4 (IEEE 802.11a/n) Wi-Fi 5 (IEEE 802.11ac) Wi-Fi 6 (IEEE 802.11ax)
2.4 GHz Wi-Fi	Wi-Fi 4 (IEEE 802.11b/g/n) Wi-Fi 6 (IEEE 802.11ax)
Operating band	IEEE 802.11b/g/n/ax, 2.400 GHz to 2.4835 GHz IEEE 802.11a/n/ac/ax, 5.150 GHz to 5.350 GHz, 5.470 GHz to 5.725 GHz, 5.725 GHz to 5.850 GHz Note: Available bands vary with countries and regions. To use the preceding frequency bands, ensure that your country or region supports these frequency bands.
Radio design	Dual-radio 4 spatial streams • 2.4 GHz: 2 x 2, MU-MIMO • 5 GHz: 2 x 2, MU-MIMO
FEM	2.4 GHz: 2 x eFEM 5 GHz: 2 x eFEM
6 GHz channel width	No
5 GHz channel width	Auto/20/40/80 MHz
2.4 GHz channel width	Auto/20/40 MHz
Maximum wireless data rate	1774 Mbps
6 GHz wireless data rate	No
5 GHz wireless data rate	1201 Mbps
2.4 GHz wireless data rate	573 Mbps

Hardware Specifications

Model	RG-RAP6260(G)
Maximum transmit power	<p>Frequency bands and maximum Effective Isotropic Radiated Power (EIRP):</p> <p>Note: Country specific restrictions apply.</p> <p>European Union & United Kingdom: 2400–2483.5 MHz, EIRP ≤ 20 dBm 5470–5725 MHz, EIRP ≤ 30 dBm</p> <p>Myanmar: 2400–2483.5 MHz, EIRP ≤ 23 dBm 5725–5825 MHz, EIRP ≤ 30 dBm</p> <p>Thailand: 2400–2483.5 MHz, EIRP ≤ 20 dBm 5470–5725 MHz, EIRP ≤ 30 dBm 5725–5825 MHz, EIRP ≤ 30 dBm</p> <p>Indonesia: 2400–2483.5 MHz, EIRP ≤ 36 dBm 5725–5825 MHz, EIRP ≤ 36 dBm</p> <p>Egypt: 2400–2483.5 MHz, EIRP ≤ 20 dBm 5150–5350 MHz, EIRP ≤ 23 dBm</p> <p>Vietnam: 2400–2483.5 MHz, EIRP ≤ 23 dBm 5150–5350 MHz, EIRP ≤ 23 dBm 5470–5725 MHz, EIRP ≤ 30 dBm 5725–5850 MHz, EIRP ≤ 30 dBm</p>
Maximum transmit power (6 GHz)	No
Maximum transmit power (5 GHz)	<p>Combined power: 28 dBm (single-stream power: 25 dBm)</p> <p>Note: The transmit power varies according to regulations in different countries and regions.</p>
Maximum transmit power (2.4 GHz)	<p>Combined power: 29 dBm (single-stream power: 26 dBm)</p> <p>Note: The transmit power varies according to regulations in different countries and regions.</p>
Coverage range	<p>5 GHz max: 400 m (1312.34 ft.) 2.4 GHz max: 150 m (492.13 ft.) 5 GHz recommended: 200 m (656.17 ft.) 2.4 GHz recommended: 50 m (164.04 ft.)</p> <p>Note: The data is obtained in an ideal environment without obstruction. The signal coverage radius depends on client performance and environmental interference.</p>
Modulation	<p>OFDM: BPSK @ 6/9 Mbps, QPSK @ 12/18 Mbps, 16-QAM @ 24 Mbps, 64-QAM @ 48/54 Mbps</p> <p>DSSS: DBPSK @ 1 Mbps, DQPSK @ 2 Mbps, and CCK @ 5.5/11 Mbps</p> <p>MIMO-OFDM: BPSK, QPSK, 16-QAM, 64-QAM, 256-QAM and</p>

Hardware Specifications

Model	RG-RAP6260(G)
	1024-QAM OFDMA
Receive sensitivity	11b: -91 dBm (1 Mbps), -88 dBm (5.5 Mbps), -85 dBm (11 Mbps) 11a/g: -89 dBm (6 Mbps), -80 dBm (24 Mbps), -76 dBm (36 Mbps), -71 dBm (54 Mbps) 11n: -83 dBm (MCS0), -65 dBm (MCS7), -83 dBm (MCS8), -65 dBm (MCS15) 11ac: 20 MHz: -83 dBm (MCS0), -57 dBm (MCS9) 11ac: 40 MHz: -79 dBm (MCS0), -57 dBm (MCS9) 11ac: 80 MHz: -76 dBm (MCS0), -51 dBm (MCS9) 11ax: 20 MHz: -85 dBm (MCS0), -58 dBm (MCS11) 11ax: 40 MHz: -82 dBm (MCS0), -54 dBm (MCS11) 11ax: 80 MHz: -79 dBm (MCS0), -52 dBm (MCS11)
Antenna	
Antenna	2.4 GHz: 2 built-in omnidirectional antennas 5 GHz: 2 built-in omnidirectional antennas
Antenna horizontal orientation	No
Antenna vertical orientation	No
Antenna gain (6 GHz)	No
Antenna gain (5 GHz)	6.00 dBi
Antenna gain (2.4 GHz)	4.00 dBi
Dimensions and Weight	
Product dimensions (W x D x H)	298 mm x 298 mm x 65 mm (11.73 in. x 11.73 in. x 2.56 in.) (excluding the mounting bracket)
Color	White
Weight	≤ 1.35 kg (2.98 lbs.) (without packaging materials)
Shipping weight	≤ 3.32 kg (7.32 lbs.)
Port Specifications	
Number of 10/100/1000BASE-T ports	1
Number of 1GE SFP ports	1
Reset button	1

Hardware Specifications

Model	RG-RAP6260(G)
LEDs	1 x system status LED
Power Supply and Consumption	
Power supply	PoE+
Local power supply	No
Dimensions of the DC connector	No
PoE In standard	IEEE 802.3at (PoE+)
PoE budget	No
Maximum power consumption	18 W
Environment and Reliability	
Operating temperature	-40°C to +65°C (-40°F to +149°F)
Storage temperature	-40°C to +85°C (-40°F to +185°F)
Operating humidity	0% RH to 100% RH (non-condensing)
Storage humidity	0% RH to 100% RH (non-condensing)
Mounting options	Wall/Pole
IP rating	IP68
Surge protection	Ethernet port: ±4 kV for common mode
MTBF	400,000 hours
Certification and Regulatory Compliance	
RoHS	Yes
Safety compliance	EN 62368-1
EMC	EN 55032 EN 55035 EN 61000-3-3 EN 61000-3-2 EN 301489-1 EN 301489-3 EN 301489-17

/ Hardware Specifications

Model	RG-RAP6260(G)
RF	EN 300 328 EN 301 893 EN 300 440
Certification	CE, CB
System Specifications	
Flash memory	16 MB
RAM	256 MB DDR3

Software Specifications

Model	RG-RAP6260(G)
Basic Configurations	
AP mode	Yes
Routing mode	Yes
Internet access mode	Static IP address Static IPv6 address Dynamic IP address Dynamic IPv6 address PPPoE
Interface	
IPTV transparent transmission	No
Ethernet Interface	
PPPoE clients	Yes
Ethernet Switching	
IEEE 802.1Q VLAN	Yes
WLAN	
Maximum number of associated wireless clients	64 (2.4 GHz) 256 (5 GHz) 256 (2.4 GHz and 5 GHz enabled)
Recommended number of associated wireless clients	<ul style="list-style-type: none"> ● Support for IEEE 802.11ax: <ul style="list-style-type: none"> 16 (2.4 GHz) 84 (5 GHz) 100 (2.4 GHz and 5 GHz enabled) <ul style="list-style-type: none"> ● Support for IEEE 802.11ac: <ul style="list-style-type: none"> 16 (2.4 GHz) 64 (5 GHz) 80 (2.4 GHz and 5 GHz enabled)
Maximum number of SSIDs	8
Radio-based client limiting	Yes
Layer 2 isolation	Yes
OFDMA	Yes
WMM	Yes

Software Specifications

Model	RG-RAP6260(G)
DFS	Yes
MLO	No
4K-QAM	No
Different SSIDs for the same VLAN	Yes
Enabling/Disabling MLO	No
AP load balancing	No
Beamforming	Yes
802.11k/v roaming	Yes
Fast transition (802.11r)	Yes
Layer 2 roaming	Yes
Layer 3 roaming	Yes
AI roaming	Yes
PSK authentication	Yes
Static allowlist	Yes
Adjusting the transmit power for beacon and probe frames	Yes
Encryption mode (WPA-PSK, WPA2-PSK, WPA/WPA2-PSK)	Yes
OWE (Enhanced Open)	
WPA3-SAE	Yes
WPA2-PSK/WPA3-SAE	
Number of blocklists and allowlists based on MAC addresses (single SSID)	256
Number of global blocklists/allowlists	256
Mesh management	Yes
AP Mesh	Yes

Software Specifications

Model	RG-RAP6260(G)
AP portal authentication	Yes
Maximum number of devices that can be managed	300
One-Click Network Optimization	Yes
Static blocklist	Yes
IP Service	
ARP binding	Yes
IPv4 ping	Yes
IPv6 ping	Yes
Traceroute	Yes
Static/Dynamic NAT	Yes
DHCP server	Yes
IPv6	Yes
Authentication	
802.1X authentication	Yes
Network Management and Monitoring	
Wireless repeater mode	Yes
Web login information	Single-device login address: 10.44.77.254 Network-wide login address: 10.44.77.253 Default password: admin
Network-wide configuration and management	Yes
Ruijie Reyee App management	Yes
eWeb management	Yes
Ruijie Cloud management	Yes
SNMP	Yes

Software Specifications

Model	RG-RAP6260(G)
Configuration synchronization among the app, eWeb, and Ruijie Cloud	Yes
Displaying device information on Ruijie Cloud	Yes

/ Package Contents

Model	RG-RAP6260(G)
Package Contents	
Package Contents	1 x AP 2 x Pole clamps 1 x Mounting bracket 2 x Cross pan head screws (M4 x 10 mm) 2 x Internal/External hex machine screws (M8 x 20 mm) 4 x Expansion anchors (M8 x 60 mm) 1 x Cable gland for an SFP port 1 x Cable gland for an Ethernet port (pre-installed) 1 x SFP port plug (pre-installed) 1 x Mounting arm (pre-installed) 1 x User Manual 1 x Warranty Card
Accessories	
Power adapter	No

Ruijie | **Reyee**

 **R**edefine **y**our **e**asy **n**etwork



Ruijie Networks Co., Ltd.

Official Website: <https://Reyee.Ruijie.com>