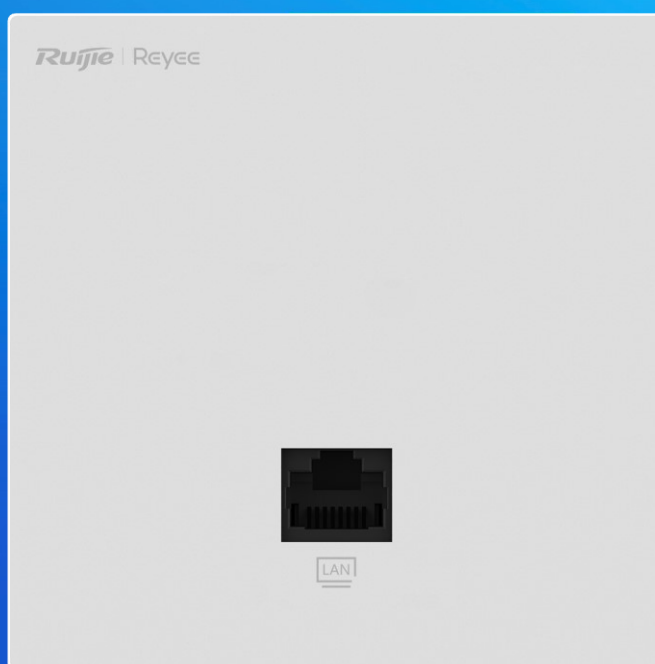


RG-RAP1261

Reyee Wi-Fi 6 AX3000 Ultra-Thin Wall Plate Access Point



Highlights

- Dual-radio performance, gigabit wireless wall-mounted AP
- Better experience with Cooling Patent Technology
- Easy installation, 86mm standard compatible
- Capable of Reyee Mesh and 802.11K/V/R
- Powerful Standalone Portal via Ruijie Cloud

Highlight Features

AX3000 Dual-Band Ultra-Thin Wall Plate Access Point

RG-RAP1261



8.5mm
Ultra Thin



2.4G/5G



2x2 MIMO



Cooling Patent



PoE in 802.3af

Experience Wi-Fi 6, Experience Gigabit Internet

New upgrade to AX3000, Speed Test reaches 950Mbps, delivering the fastest possible internet experience



Wi-Fi5

Download
Mbps: 418

Download
Mbps: 950



RG-RAP1261

Wi-Fi6

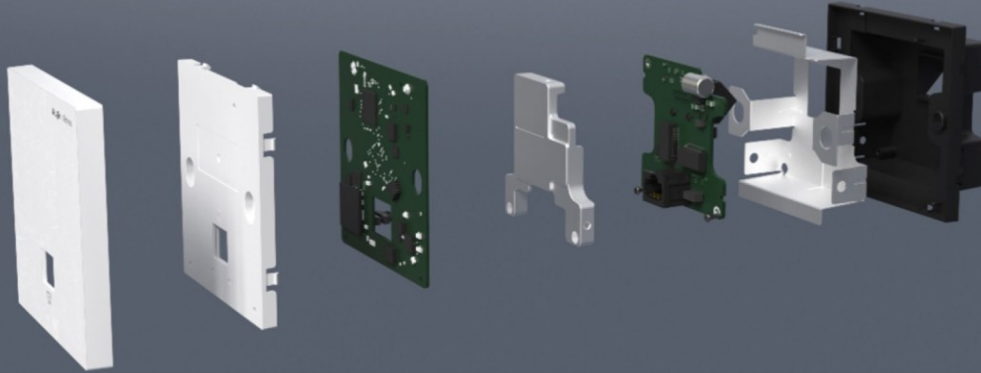
Easy Installation, Worldwide Compatible



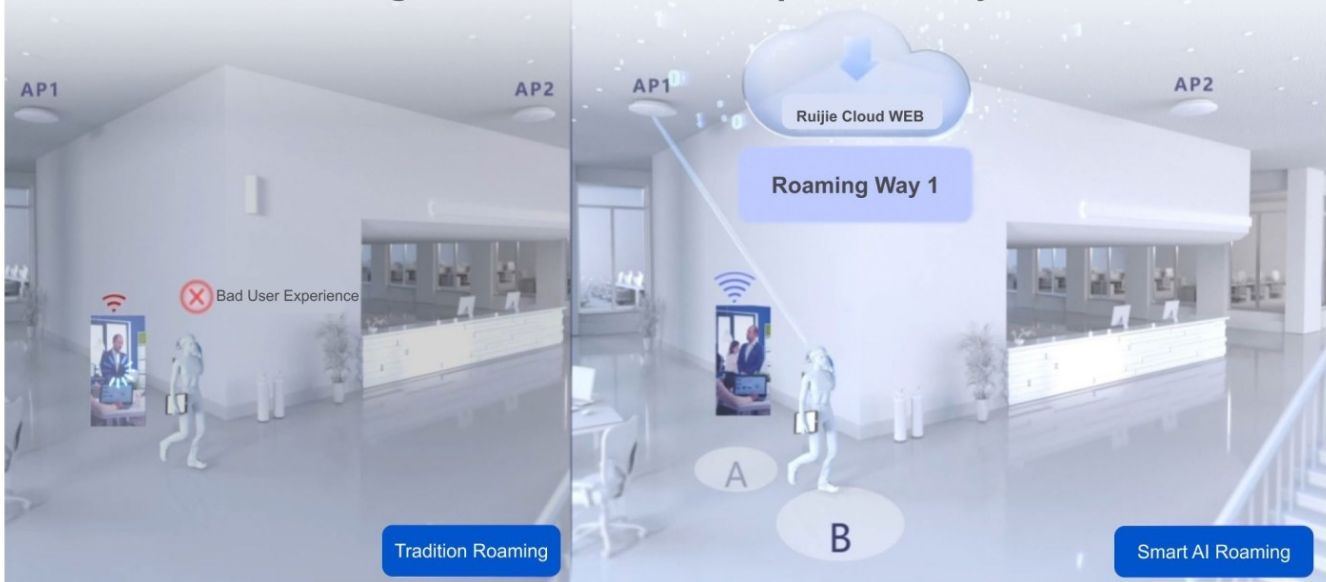
Highlight Features

Unprecedented This Design with 8.5mm and Patent Technology

Thinner, Cooler, Stronger. Averagely reduced 7.c in working mode

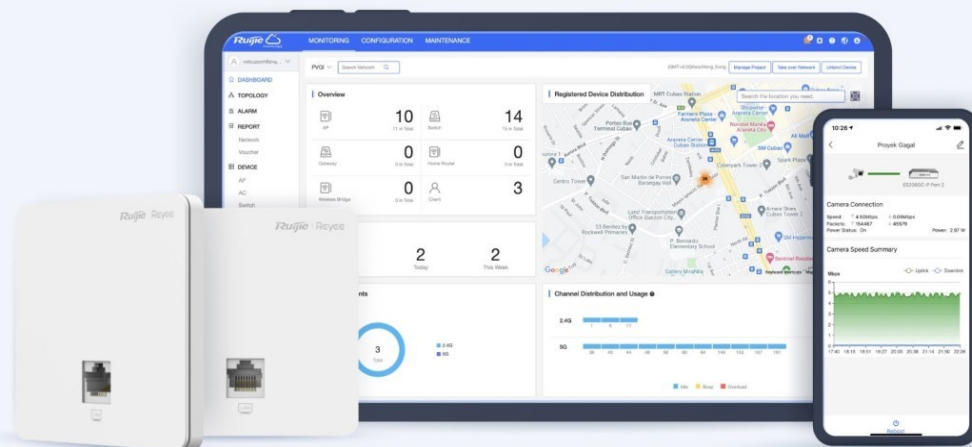


Smart AI Roaming Enhances Wireless Experience Anywhere You Go



Cloud, Make Your Business Easy

- Self-organizing network
- Cloud portal authentication
- Remote monitoring and maintenance
- Upgrade firmware via Cloud
- APP library dynamically update



Product Information

Model	RG-RAP1261
Product Type	Wall AP

Hardware Specifications

Model	RG-RAP1261
Wi-Fi Radio	
6 GHz Wi-Fi	No
5 GHz Wi-Fi	Wi-Fi 4 (IEEE 802.11a/n) Wi-Fi 5 (IEEE 802.11ac) Wi-Fi 6 (IEEE 802.11ax)
2.4 GHz Wi-Fi	Wi-Fi 4 (IEEE 802.11b/g/n) Wi-Fi 6 (IEEE 802.11ax)
Operating band	IEEE 802.11b/g/n/ax, 2.400 GHz to 2.4835 GHz IEEE 802.11a/n/ac/ax, 5.150 GHz to 5.350 GHz, 5.470 GHz to 5.725 GHz, 5.725 GHz to 5.850 GHz Note: Available bands vary with countries and regions. To use the preceding frequency bands, ensure that your country or region supports these frequency bands.
Radio design	Dual-radio 4 spatial streams • 2.4 GHz: 2 x 2, MU-MIMO • 5 GHz: 2 x 2, MU-MIMO
FEM	iFEM
6 GHz channel width	No
5 GHz channel width	Auto/20/40/80/160 MHz
2.4 GHz channel width	Auto/20/40 MHz
Maximum wireless data rate	2974 Mbps
6 GHz wireless data rate	No
5 GHz wireless data rate	2401 Mbps
2.4 GHz wireless data rate	573 Mbps

Hardware Specifications

Model	RG-RAP1261
<p>Maximum transmit power</p>	<p>Frequency bands and maximum Effective Isotropic Radiated Power (EIRP):</p> <p>Note: Country specific restrictions apply.</p> <p>European Union & United Kingdom: 2400–2483.5 MHz, EIRP ≤ 20 dBm 5150–5350 MHz, EIRP ≤ 23 dBm 5470–5725 MHz, EIRP ≤ 30 dBm</p> <p>United States: 2400–2483.5 MHz, max output power ≤ 30 dBm & EIRP ≤ 36 dBm 5150–5250 MHz, max output power ≤ 30 dBm & EIRP ≤ 36 dBm 5250–5350 MHz, max output power < 24 dBm & EIRP ≤ 30 dBm 5470–5725 MHz, max output power < 24 dBm & EIRP ≤ 30 dBm 5725–5850 MHz, max output power ≤ 30 dBm & EIRP ≤ 36 dBm</p> <p>Myanmar: 2400–2483.5 MHz, EIRP ≤ 23 dBm 5725–5825 MHz, EIRP ≤ 30 dBm</p> <p>Thailand: 2400–2483.5 MHz, EIRP ≤ 20 dBm 5150–5350 MHz, EIRP ≤ 23 dBm 5470–5725 MHz, EIRP ≤ 30 dBm 5725–5825 MHz, EIRP ≤ 30 dBm</p> <p>Indonesia: 2400–2483.5 MHz, EIRP ≤ 27 dBm 5150–5350 MHz, EIRP ≤ 23 dBm 5725–5825 MHz, EIRP ≤ 23 dBm</p> <p>Egypt: 2400–2483.5 MHz, EIRP ≤ 20 dBm 5150–5350 MHz, EIRP ≤ 23 dBm</p> <p>Vietnam: 2400–2483.5 MHz, EIRP ≤ 23 dBm 5150–5350 MHz, EIRP ≤ 23 dBm 5470–5725 MHz, EIRP ≤ 30 dBm 5725–5850 MHz, EIRP ≤ 30 dBm</p>
<p>Maximum transmit power (6 GHz)</p>	<p>No</p>
<p>Maximum transmit power (5 GHz)</p>	<p>Combined power: 21 dBm (single-stream power: 18 dBm) Note: The transmit power varies according to regulations in different countries and regions.</p>
<p>Maximum transmit power (2.4 GHz)</p>	<p>Combined power: 21 dBm (single-stream power: 18 dBm) Note: The transmit power varies according to regulations in different countries and regions.</p>
<p>Coverage range</p>	<p>45 m² (484.38 square ft.) Note: The data is obtained in an ideal environment without</p>

Hardware Specifications

Model	RG-RAP1261
	obstruction. The signal coverage radius depends on client performance and environmental interference.
Modulation	OFDM: BPSK @ 6/9 Mbps, QPSK @ 12/18 Mbps, 16-QAM @ 24 Mbps, 64-QAM @ 48/54 Mbps DSSS: DBPSK @ 1 Mbps, DQPSK @ 2 Mbps, and CCK @ 5.5/11 Mbps MIMO-OFDM: BPSK, QPSK, 16-QAM, 64-QAM, 256-QAM and 1024-QAM OFDMA
Receive sensitivity	11b: -91 dBm (1 Mbps), -88 dBm (5.5 Mbps), -85 dBm (11 Mbps) 11a/g: -89 dBm (6 Mbps), -80 dBm (24 Mbps), -76 dBm (36 Mbps), -71 dBm (54 Mbps) 11n: -83 dBm (MCS0), -65 dBm (MCS7), -83 dBm (MCS8), -65 dBm (MCS15) 11ac: 20 MHz: -83 dBm (MCS0), -57 dBm (MCS9) 11ac: 40 MHz: -79 dBm (MCS0), -57 dBm (MCS9) 11ac: 80 MHz: -76 dBm (MCS0), -51 dBm (MCS9) 11ac: 160 MHz: -76 dBm (MCS0), -50 dBm (MCS9) 11ax: 20 MHz: -85 dBm (MCS0), -58 dBm (MCS11) 11ax: 40 MHz: -82 dBm (MCS0), -54 dBm (MCS11) 11ax: 80 MHz: -79 dBm (MCS0), -52 dBm (MCS11) 11ax: 160 MHz: -76 dBm (MCS0), -49 dBm (MCS11)
Antenna	
Antenna	Integrated 2.4 GHz and 5 GHz: 2 built-in omnidirectional antennas
Antenna horizontal orientation	No
Antenna vertical orientation	No
Antenna gain (6 GHz)	No
Antenna gain (5 GHz)	3.00 dBi
Antenna gain (2.4 GHz)	3.00 dBi
Dimensions and Weight	
Product dimensions (W x D x H)	86 mm x 42.4 mm x 86 mm (3.39 in. x 1.67 in. x 3.39 in.)
Color	White
Weight	≤ 0.16 kg (0.35 lbs.) (without packaging materials)

Hardware Specifications

Model	RG-RAP1261
Shipping weight	≤ 0.19 kg (0.42 lbs.)
Port Specifications	
Number of 10/100/1000BASE-T ports	2
Reset button	1
LEDs	1 x system status LED
Power Supply and Consumption	
Power supply	PoE/PoE+
Local power supply	No
Dimensions of the DC connector	No
PoE In standard	<ul style="list-style-type: none">• IEEE 802.3af (PoE)• IEEE 802.3at (PoE+)
PoE budget	No
Maximum power consumption	10.2 W
Environment and Reliability	
Operating temperature	0°C to 40°C (32°F to 104°F)
Storage temperature	-40°C to +70°C (-40°F to +158°F)
Operating humidity	5% RH to 95% RH (non-condensing)
Storage humidity	5% RH to 95% RH (non-condensing)
Mounting options	Junction box
IP rating	No
Surge protection	Ethernet port: ±2 kV for common mode
MTBF	400,000 hours
Certification and Regulatory Compliance	
RoHS	Yes
Safety compliance	EN 62368-1

/ Hardware Specifications

Model	RG-RAP1261
EMC	EN 55032 EN 55035 EN 61000-3-3 EN 61000-3-2 EN 301489-1 EN 301489-3 EN 301489-17
RF	EN 300 328 EN 301 893 EN 300 440
Certification	CE, CB
System Specifications	
Flash memory	128 MB
RAM	256 MB DDR3

Software Specifications

Model	RG-RAP1261
Basic Configurations	
AP mode	Yes
Routing mode	Yes
Internet access mode	Static IP address Static IPv6 address Dynamic IP address Dynamic IPv6 address PPPoE
Interface	
IPTV transparent transmission	Yes
Ethernet Interface	
PPPoE clients	Yes
Ethernet Switching	
IEEE 802.1Q VLAN	Yes
WLAN	
Maximum number of associated wireless clients	64 (2.4 GHz) 256 (5 GHz) 256 (2.4 GHz and 5 GHz enabled)
Recommended number of associated wireless clients	<ul style="list-style-type: none"> ● Support for IEEE 802.11ax and 160 MHz: <ul style="list-style-type: none"> 16 (2.4 GHz) 94 (5 GHz) 110 (2.4 GHz and 5 GHz enabled) ● Support for IEEE 802.11ax and 80 MHz: <ul style="list-style-type: none"> 16 (2.4 GHz) 64 (5 GHz) 80 (2.4 GHz and 5 GHz enabled) <ul style="list-style-type: none"> ● Support for IEEE 802.11ac: <ul style="list-style-type: none"> 8 (2.4 GHz) 32 (5 GHz) 40 (2.4 GHz and 5 GHz enabled)
Maximum number of SSIDs	8
Radio-based client limiting	Yes
Layer 2 isolation	Yes

Software Specifications

Model	RG-RAP1261
OFDMA	Yes
WMM	Yes
DFS	Yes
MLO	No
4K-QAM	No
Different SSIDs for the same VLAN	Yes
Enabling/Disabling MLO	No
AP load balancing	Yes
Beamforming	Yes
802.11k/v roaming	Yes
Fast transition (802.11r)	Yes
Layer 2 roaming	Yes
Layer 3 roaming	Yes
AI roaming	Yes
PSK authentication	Yes
Static allowlist	Yes
Adjusting the transmit power for beacon and probe frames	Yes
Encryption mode (WPA-PSK, WPA2-PSK, WPA/WPA2-PSK)	Yes
OWE (Enhanced Open) WPA3-SAE WPA2-PSK/WPA3-SAE	Yes
Number of blocklists and allowlists based on MAC addresses (single SSID)	256
Number of global blocklists/allowlists	256

Software Specifications

Model	RG-RAP1261
Mesh management	Yes
AP Mesh	Yes
AP portal authentication	Yes
Maximum number of devices that can be managed	300
One-Click Network Optimization	Yes
Static blacklist	Yes
IP Service	
ARP binding	Yes
IPv4 ping	Yes
IPv6 ping	Yes
Traceroute	Yes
Static/Dynamic NAT	Yes
DHCP server	Yes
IPv6	Yes
Authentication	
802.1X authentication	Yes
Network Management and Monitoring	
Wireless repeater mode	Yes
Web login information	Single-device login address: 10.44.77.254 Network-wide login address: 10.44.77.253 Default password: admin
Network-wide configuration and management	Yes
Ruijie Reyee App management	Yes
eWeb management	Yes
Ruijie Cloud management	Yes

Software Specifications

Model	RG-RAP1261
SNMP	Yes
Configuration synchronization among the app, eWeb, and Ruijie Cloud	Yes
Displaying device information on Ruijie Cloud	Yes

Package Contents

Model	RG-RAP1261
Package Contents	
Package Contents	1 x AP 2 x Cross pan head screws (M4 x 40 mm) 1 x User Manual 1 x Warranty Card
Accessories	
Power adapter	No

Ruijie | ReYee

 Redefine your easy network



Ruijie Networks Co., Ltd.

Official Website: <https://Reyee.Ruijie.com>