


AC672

Access Control Hardware Manual

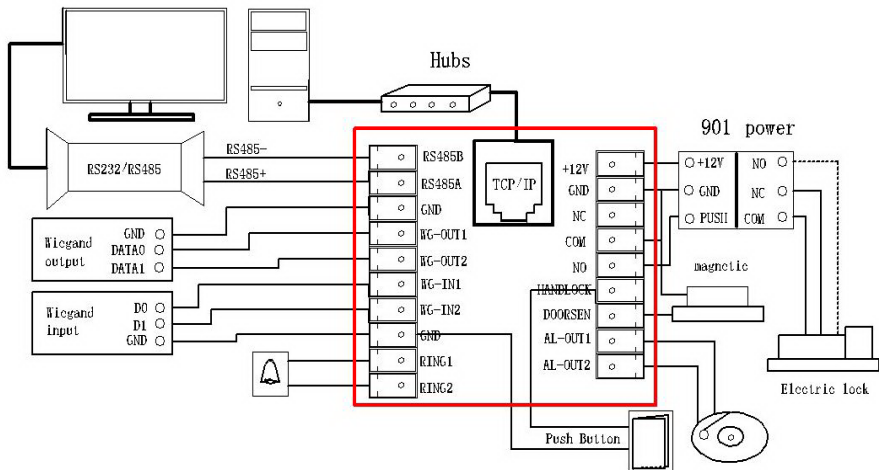


This model design concise, easy to use fingerprint entrance guard terminal equipment, and can be installed in those who need to enter the authorized sensitive area, innovation in the fingerprint identification is a high security and senior gateway management together, achieve access control of high safety management.

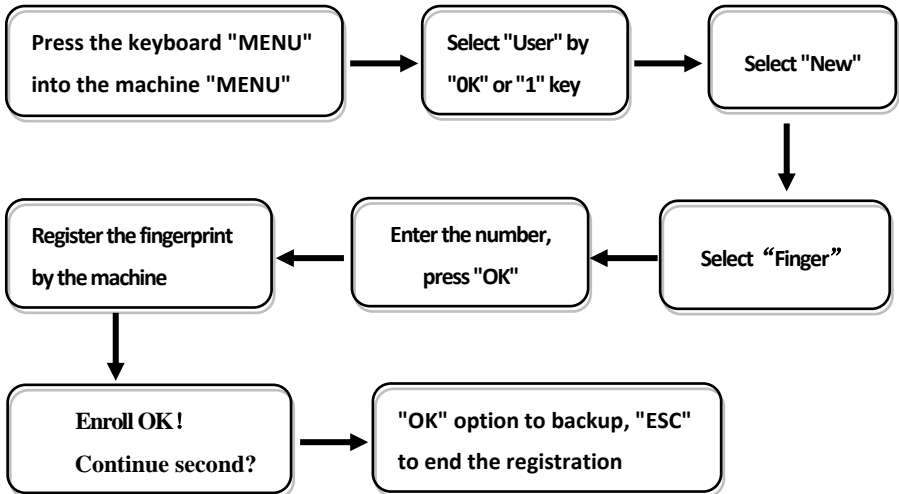
Key description

- OK** Confirm key: make sure your current operation;
 - MENU** Menu button: In the initial condition according to the key can enter the management interface;
 - ESC** Cancel button: Cancel your current operation;
 - ▲ Up key: Turning up menu items;
 - ▼ Down key: Turning down menu items;
 -  The bell button: Control the doorbell switch;
- Digital:** Input digital 0-9;

The wiring diagram

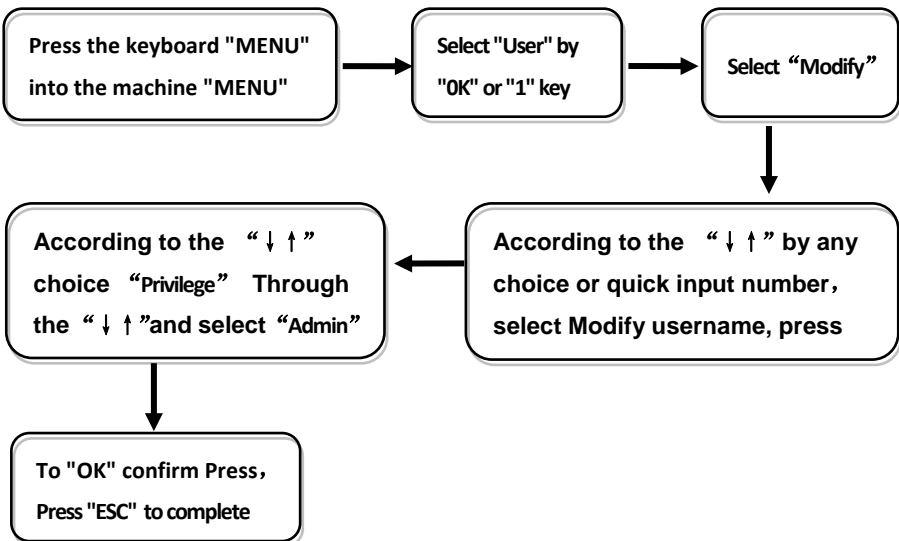


1.1 Registered users



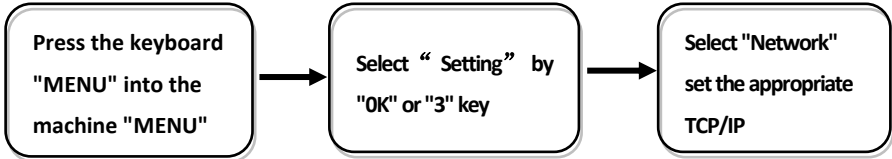
Note: when choosing a password or ID card (machine with the function), the name of the person can be uploaded through the access control software;

1.2 Administrator setting



Note: after setting the administrator, the menu needs to be confirmed by the administrator, the success of the menu;

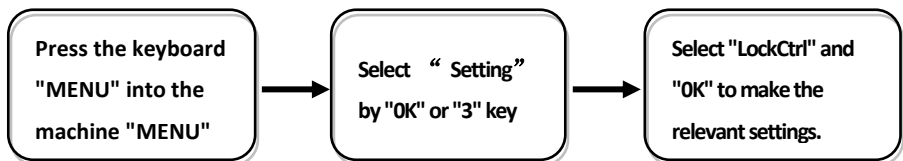
1.3 Communication settings



- ☆Baudrate: communication with the computer communications rate, were **9600, 19200, 38400, 57600, 115200** five option;
- ☆Device IP: the default IP for the **192.168.8.198**, you can according to the need for change;
- ☆Subnet mask: the default for **255.255.255.0**, you can according to the need for change;
- ☆Default gateway: the default for **192.168.8.1**, you can be the basis of the need for change;
- ☆Device port: communication used the port number, the default for **5005**;
- ☆Server IP: the default for **192.168.0.1**, real-time monitoring of the computer when IP address, you can be the basis of the need for change;
- ☆Server port: communication port, the default used for **7005**;
- ☆Realtime Req: real-time monitoring fingerprint access to the computer when whether to send data. The default is no;

Note: the need to use the network interface communication when it is necessary to carry out the setting, if the USB communication is directly inserted into the USB line;

2. Entrance guard function setting



Remarks:

- ☆Time setting: is defined time for a week each day can unlock the definition of the time;
- ☆Users: user entrance guard Settings is the user the lock and unlock the set time combination;
- ☆Unlock Time: is fingerprints machine control open or close the locks of the time;
- ☆Lock Type Set: includes three kinds:: No、Open、Close; “No” refers to not use magnetic switch on the door, “Open” often a door lock is to open, “Close” the door closed to lock the shu started the multicolored;
- ☆Anti Pass: To prevent the following entry;

- ☆Alarm Time: is open the door for some time after began to call the police, this paragraph of time is door magnetic delay
- ☆Turn Off Alarm: in alarm has trigger, and has ruled illegal operation, but not by this option to stop the police.

3. Fingerprint Integrated

① This is the preference when you buy the machine;



② As seen here: grip the two sides of frame cover, pull outward slightly



③ As seen here: take out the frame cover from bottom to top;



④ As seen here: put screws in place red marked, and install the device on the wall.



Noted: Fasten the orientation template on the wall first, and put the sealing ring on, then install the device.

⑤ Put the frame cover back



⑥ Put the frame cover back from top to button



⑦ Lock the frame cover from outside.



4. Packing List

In addition to the machines, the box also contains the following items:

Operating Instructions 1PCS

USB data cable 1PCS

Screws 4PCS

Up stopper 4PCS

Ring 1PCS

Installation positioning template 1PCS

Terminal (2P, 3P, 4P, 10P each one)