

DS-7732NXI-I4/16P/VPro AcuSeek NVR



- H.265+/H.265/H.264+/H.264 video formats
- Intelligent analytics based on Guanlan Large-Scale AI Models
- Up to 32-ch AcuSeek and AcuSearch function
- Up to 8-ch facial recognition for face picture
- Up to 32-ch IP camera inputs
- Up to 32-ch 1080p decoding capability
- Up to 8-ch IP speakers can be connected

▪ Function

Compression and Recording

- H.265+ compression effectively reduces the storage space by up to 75%
- Full channel IP cameras connection
- Compatible to third-party network cameras

HD Video Output

- Provide independent HDMI and VGA outputs
- HDMI video output at up to 4K resolution

Storage and Playback

- Up to 4 SATA interfaces for HDD connection
- 16-ch synchronous playback at up to 1080p resolution

Smart & POS Function

- Support multiple VCA (Video Content Analytics) events
- Integrates SmartSearch, AcuSearch, and AcuSeek functions for optimized playback efficiency
- POS triggered recording and alarm, POS information overlay on live view and playback

Network & Ethernet Access

- 16 independent PoE network interfaces
- 1 self-adaptive 10/100/1000 Mbps Ethernet interfaces
- Hik-Connect & DDNS (Dynamic Domain Name System) for easy network management

▪ Specification

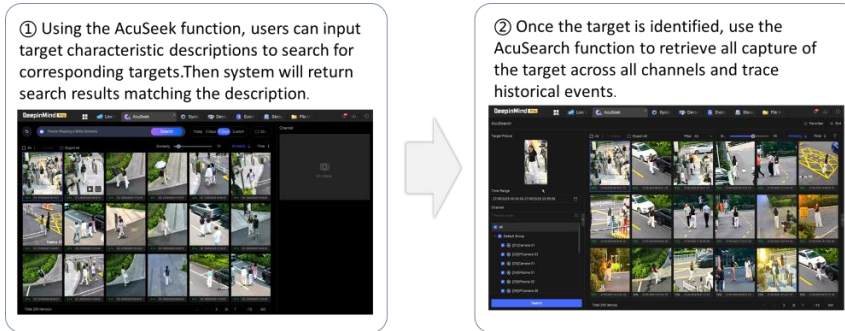
Intelligent Analytics	
AI by NVR	Facial recognition
AI by NVR and Camera	Facial recognition, perimeter protection, video structuralization, AcuSearch, motion detection 2.0, ANPR, people counting, AcuSeek
Engine	2 engines. 1 is for face picture and AcuSearch. 1 is for AcuSeek
Facial Recognition	
Face Picture Library	Up to 16 face picture libraries, with up to 50,000 face pictures in total (each picture ≤ 512 KB, total capacity ≤ 1 GB)
Face Picture Comparison	8-ch
Facial Detection and Analytics	Face picture comparison, human face capture, face picture search
Facial Detection and Analytics Performance	4-ch human face capture (HD network camera, 4-ch 2MP, 2-ch 4MP, 1-ch 8MP, H.264/H.265)
AcuSearch	
Performance	If the cameras support Hikvision AcuSense Technology and have enabled AcuSearch function, the NVR supports AcuSearch in all channels, capable of modeling 300,000 targets/day.
AcuSeek	
Performance	If the cameras support Hikvision AcuSense Technology and have enabled AcuSearch function, the NVR supports AcuSeek in all channels, capable of modeling 300,000 targets/day.
Search Language	English, French, Italian, German, Polish, Portuguese, Thai, Russian, Arabic, Turkish, Spanish, Dutch, Romanian, Czech, Swedish, Croatian, Latvian, Ukrainian, Hungarian, Danish, Japanese, Korean, Vietnamese, Indonesian, Brazilian Portuguese, Traditional Chinese
ANPR	
By Camera	<p>All channels</p> <p>Support Countries & Regions:</p> <ol style="list-style-type: none"> 1. Myanmar, Philippines, Indonesia, Vietnam, Pakistan, New Zealand, Australia, Sri Lanka, Singapore, Malaysia 2. Turkey, Croatia, Slovakia, Czech Republic, Bulgaria, Macedonia, Hungary, Greece, Poland, France, Netherlands, Switzerland, Spain, The United Kingdom, Ireland, Germany, Italy, Austria, Palestine, Latvia, Lithuania, Estonia, Belgium, Luxembourg, Ukraine, Uzbekistan, Kazakhstan, Mongolia, Moldova, Kyrgyzstan, Azerbaijan, Georgia, Armenia, Albania, Kosovo, Belarus, Cyprus, Denmark, Finland, Malta, Portugal, Romania, Slovenia, Sweden, Israel, Bosnia and Herzegovina, Turkmenistan, Montenegro, Serbia, Tajikistan, Iceland, Liechtenstein 3. Argentina, Brazil, Chile, Colombia, Peru, Ecuador, Paraguay, Uruguay, Salvador, Bolivia, Canada, Algeria, Mexico, Panama, Costa Rica, Nigeria, Kenya, Mauritius, Tanzania, Cote d'Ivoire, South Africa, Tunisia, Sierra Leone, Zambia, Ghana, Zimbabwe, Uganda, Angola, Ethiopia, Republic of Trinidad and Tobago, Dominica, Guatemala, Senegal, Algeria, Cameroon 4. Qatar, Kuwait, Oman, Jordan, Lebanon, Iraq, United Arab Emirates, Saudi Arabia, Bahrain, Egypt, Libya

Vehicle Attributes	Plate number, license plate color, license plate type
Plate Attributes	Vehicle brand, vehicle color, vehicle type
Video and Audio	
IP Video Input	32
Incoming Bandwidth	384 Mbps
Outgoing Bandwidth	256 Mbps
HDMI Output	HDMI1: 4K (3840 × 2160) / 30 Hz, 2K (2560 × 1440) / 60 Hz, 1920 × 1080 / 60 Hz, 1280 × 720 / 60 Hz HDMI2: 1920 × 1080 / 60 Hz, 1280 × 720 / 60 Hz
VGA Output	1920 × 1080/60Hz, 1280 × 720/60Hz
Video Output Mode	HDMI/VGA independent output
CVBS Output	NA
Audio Output	1-ch, RCA (Linear, 1 KΩ)
Two-Way Audio	1-ch, RCA (2.0 Vp-p, 1 KΩ)
Decoding	
Decoding Format	H.265, H.265+, H.264, H.264+, MPEG4
Recording Resolution	32MP/24MP/12MP/8MP/7MP/6MP/5MP/4MP/3MP/1080p/UXGA/720p/VGA/4CIF/D CIF/2CIF/CIF/QCIF
Synchronous playback	16-ch
Live View Window Division	1/4/6/8/9/16/25/36
Dual-Stream Recording	Support
Stream Type	Video, Video & Audio
Aux Port Window Division	1/4/6/8/9/16/25/36
Decoding Capability	Enable AI by NVR: 20-ch@1080p (30 fps) Disable AI by NVR: 32-ch@1080p (30 fps)
Audio Compression	G.711ulaw,G.711alaw,G.722,G.726,MP2L2
Network	
Network Interface	1, RJ-45 10/100/1000 Mbps self-adaptive Ethernet interface
PoE	
Interface	16, RJ-45 10/100 Mbps self-adaptive Ethernet interface
Power	≤ 200W
Standard	IEEE 802.3 af/at
Auxiliary Interface	
SATA	4 SATA interfaces
Capacity	Up to 20 TB capacity for each disk
Serial Interface	2 RS-485 (half-duplex), 1 RS-232
Alarm In/Out	16/9
USB Interface	Front panel: 2 × USB 2.0; Rear panel: 1 × USB 3.0
General	
Power Supply	≤ 360 W
Consumption	≤ 50W
Working Temperature	-10°C ~ + 55°C
Working Humidity	10% ~ 90%
Chassis	1.5U
Dimension (W × D × H)	440 x 391 x 72 mm (17.32" x 15.39" x 2.81")

Weight	≤5 kg (without HDD, 11.02 lb.)
Certification	
Obtained Certification	CE, CB, REACH, WEEE, UKCA, RCM, IC, LOA, KC
CE	EN 55032:2015, EN 61000-3-2, EN 61000-3-3, EN 50130-4

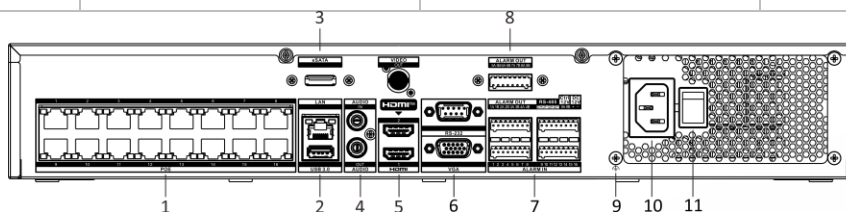
▪ Typical Application

Typical Application



▪ Physical Interface

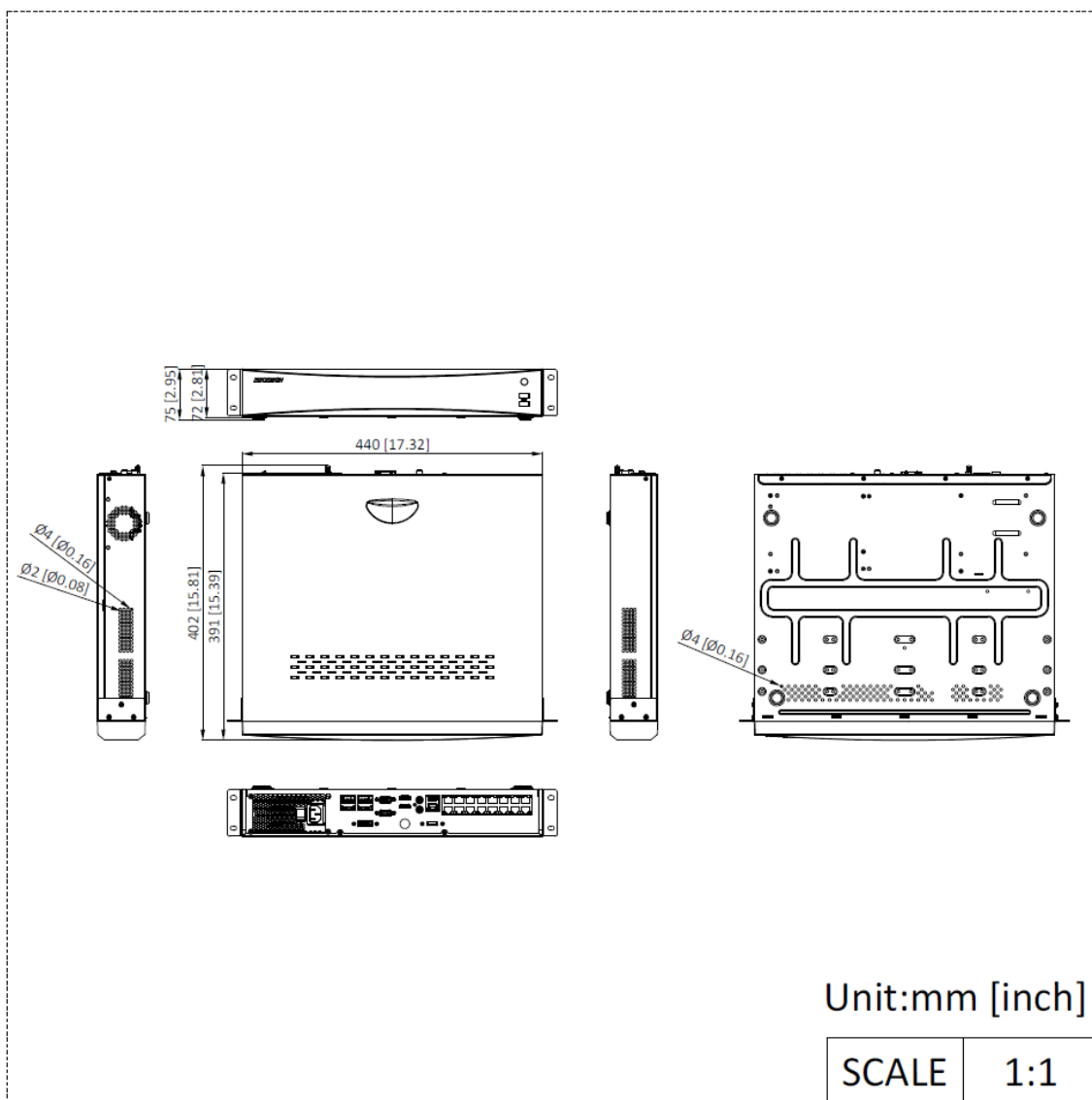
No.	Description	No.	Description
1	Network interfaces with POE function	7	Alarm in and out, RS-485, Ctrl 12V, and DC 12V
2	LAN and USB 3.0 interfaces	8	Alarm out
3	eSATA interface	9	GND
4	Audio in and out	10	Power supply
5	HDMI interfaces	11	Power switch
6	RS-232 and VGA interfaces		



▪ Available Model

- DS-7732NXI-I4/16P/VPro(STD)
- DS-7732NXI-I4/16P/VPro(NEU)
- DS-7732NXI-I4/16P/VPro(废弃)
- DS-7732NXI-I4/16P/VPro(STD)/AUS/4T
- DS-7732NXI-I4/16P/VPro(STD)/AU/PLUG
- DS-7732NXI-I4/16P/VPro(STD)/CA Branch

▪ Dimension



See Far, Go Further



www.hikvision.com
support@hikvision.com

